



LEICA IMAGE SHUTTLE

Installation

LEICA IMAGE SHUTTLE SOFTWARE

Leica Image Shuttle is a software package, which you can use to control and take photographs with your Leica S2 camera, connected to your computer with a USB cord.

The photographs produced are transferred onto your computer via the USB cord and saved on the hard drive.

SYSTEM REQUIREMENTS

WINDOWS

Windows XP / Windows Vista / Windows 7

Hardware description:

- ___ Min. 512 MB RAM
- ___ Ideally: Min. 2 GB RAM
- ___ Min. 50 MB free disk space (Windows XP: Min. 300 MB free disk space)
- ___ USB 2.0

APPLE

Mac OS X / 10.5 Leopard / 10.6 Snow Leopard

Hardware description:

- ___ Min. 512 MB RAM
- ___ Ideally: Min. 2 GB RAM
- ___ Min. 50 MB free disk space
- ___ USB 2.0

INSTALLATION UNDER WINDOWS XP

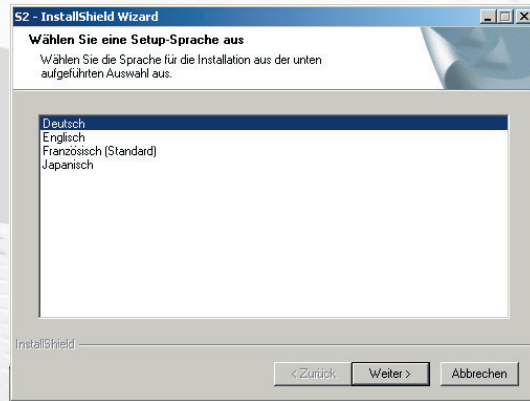
Before the Leica Image Shuttle software itself can be installed, it is necessary to install two system extensions:
.NET Framework 2.0 SP 2 and MS Visual C++ 2005 SP1.

Both of these Microsoft system components are included in the Leica Image Shuttle installation package and are installed first. During this process, you will need to restart your computer.

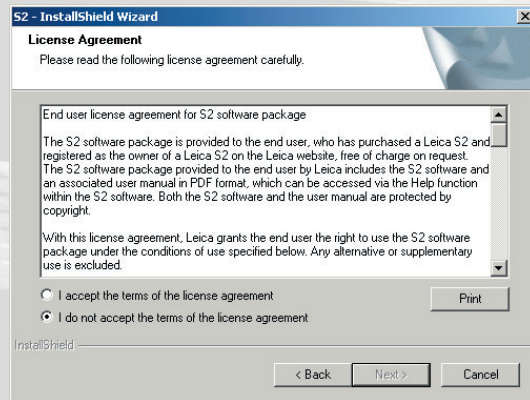
Download the installation program for “S2 Image Shuttle” in the customer area of the Leica Camera homepage and launch it.

Now select the language in which you want to install the Image Shuttle software. The available languages are German, English, French and Japanese.

LANGUAGE SELECTION

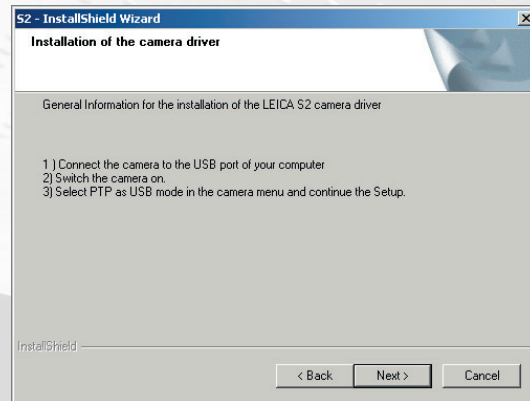


LICENCE AGREEMENT



Please read the license agreement and accept it.

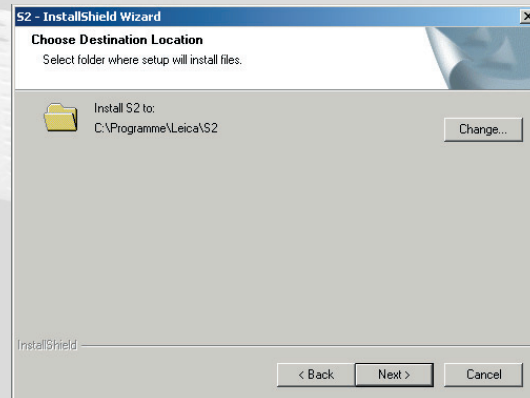
USB CAMERA DRIVER



To ensure successful communication between your Leica S2 and your Windows computer, a special USB driver must be installed. Therefore, during the software installation you will be prompted to connect the Leica S2 to your computer using the USB cord supplied.

1. Plug the USB cord into the relevant 4-pin socket using the 4-pin plug. This can be found behind the cover marked "Digital" on the left-hand side of the camera body.
2. Now connect the USB cord to a free USB port on your computer.
3. Now turn on the camera and set the USB mode on the camera to "PTP" (SETUP -> USB Mode -> PTP).
4. Your Windows computer should now detect the Leica S2.

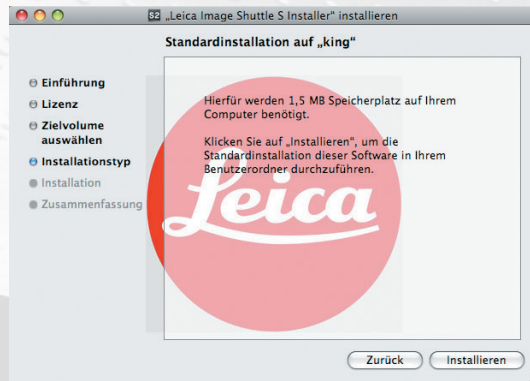
INSTALLATION LOCATION



You will now be prompted to specify a directory for installation of the Leica Image Shuttle software. Usually the proposed path should be kept. The installation program then copies the Image Shuttle software to the folder you have selected.

This completes the installation.

INSTALLATION UNDER MAC OS X



Double-click on the "S2 Image Shuttle" installation package to start installation of the software.

You will then be prompted to read the license agreement and accept it.

You can then select whether you want to install all components of the software (Standard installation) or only certain components (Custom). To ensure that the Image Shuttle software functions properly, we recommend that you install all the software components.

After installation, you will find the software in the Programs directory. To launch the software more easily in the future, you can drag the software icon to the Mac OS X dock.